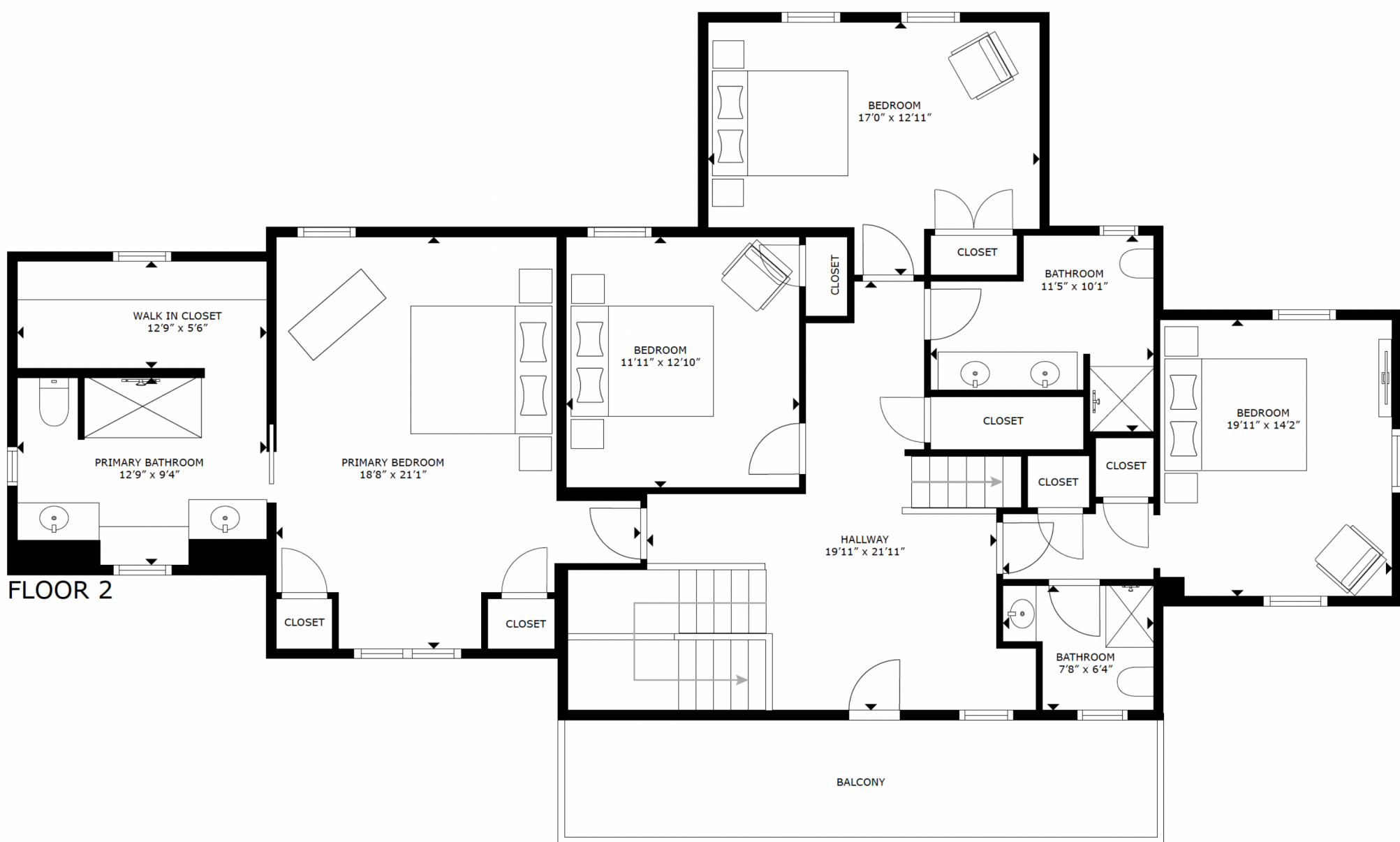


FLOOR 1

GROSS INTERNAL AREA
 BASEMENT: 1,287 sq. ft, FLOOR 1: 1,622 sq. ft,
 FLOOR 2: 1,608 sq. ft
 TOTAL: 4,517 sq. ft

SIZES AND DIMENSIONS ARE APPROXIMATE, ACTUAL MAY VARY.

First Floor | 11 Monomoy Road

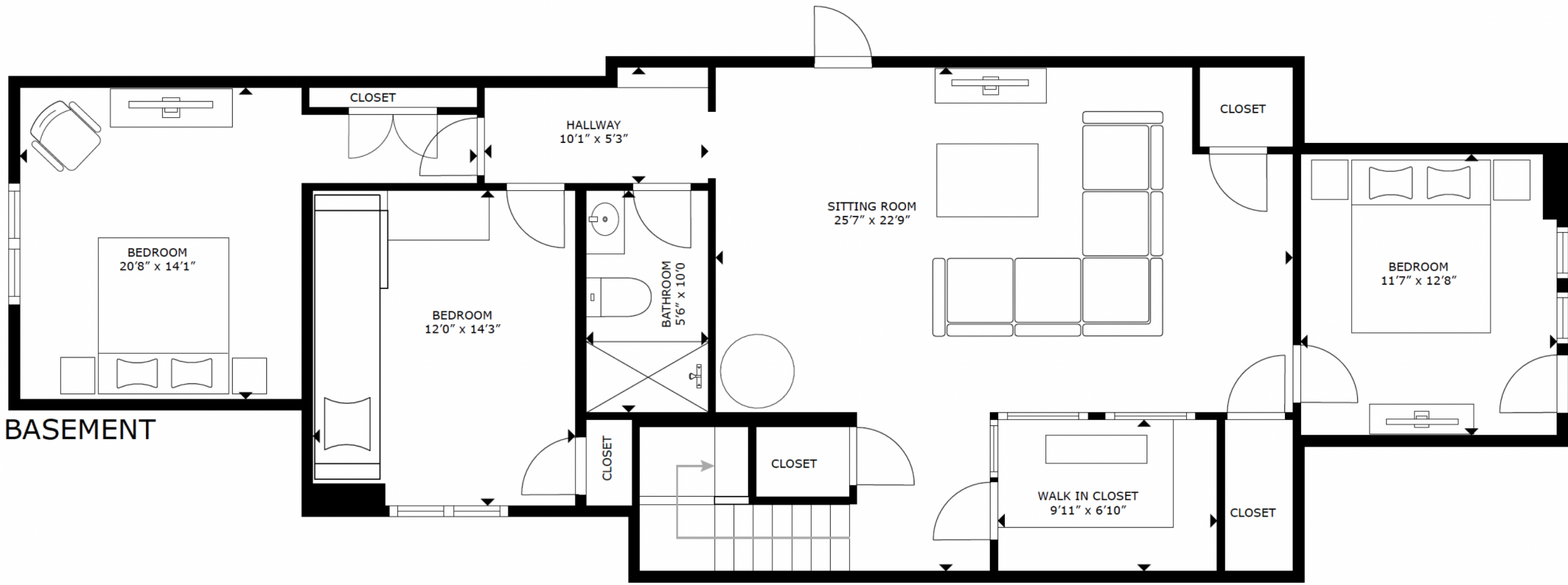


FLOOR 2

GROSS INTERNAL AREA
 BASEMENT: 1,287 sq. ft, FLOOR 1: 1,622 sq. ft,
 FLOOR 2: 1,608 sq. ft
 TOTAL: 4,517 sq. ft

SIZES AND DIMENSIONS ARE APPROXIMATE, ACTUAL MAY VARY.

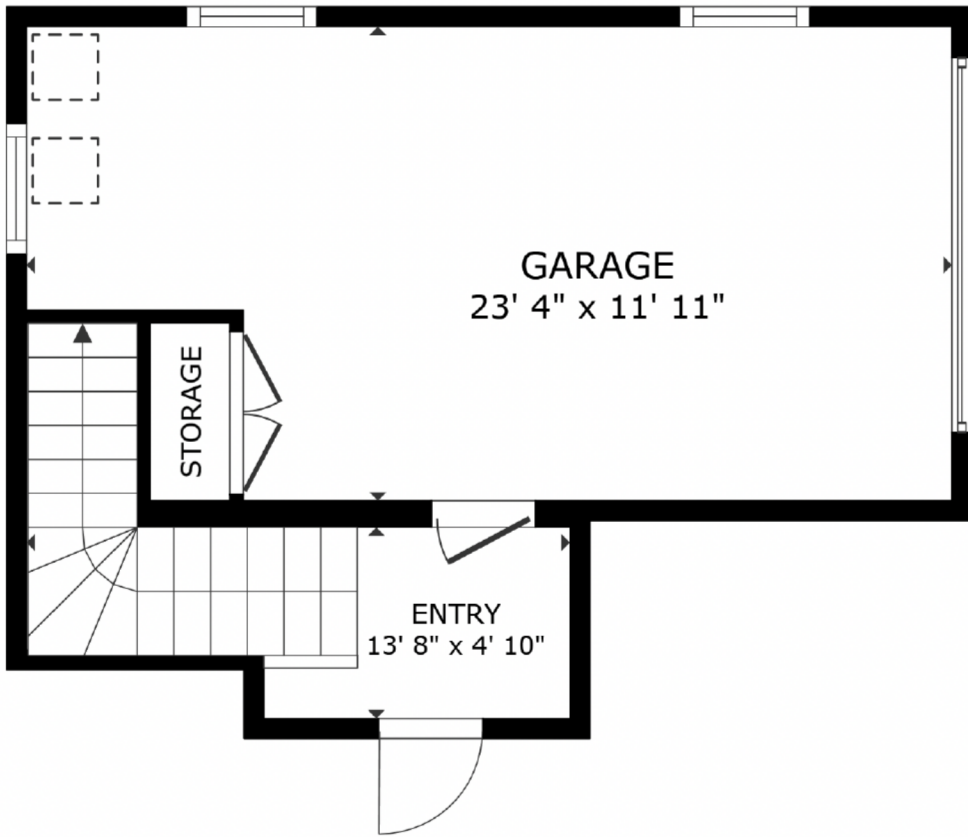
Second Floor | 11 Monomoy Road



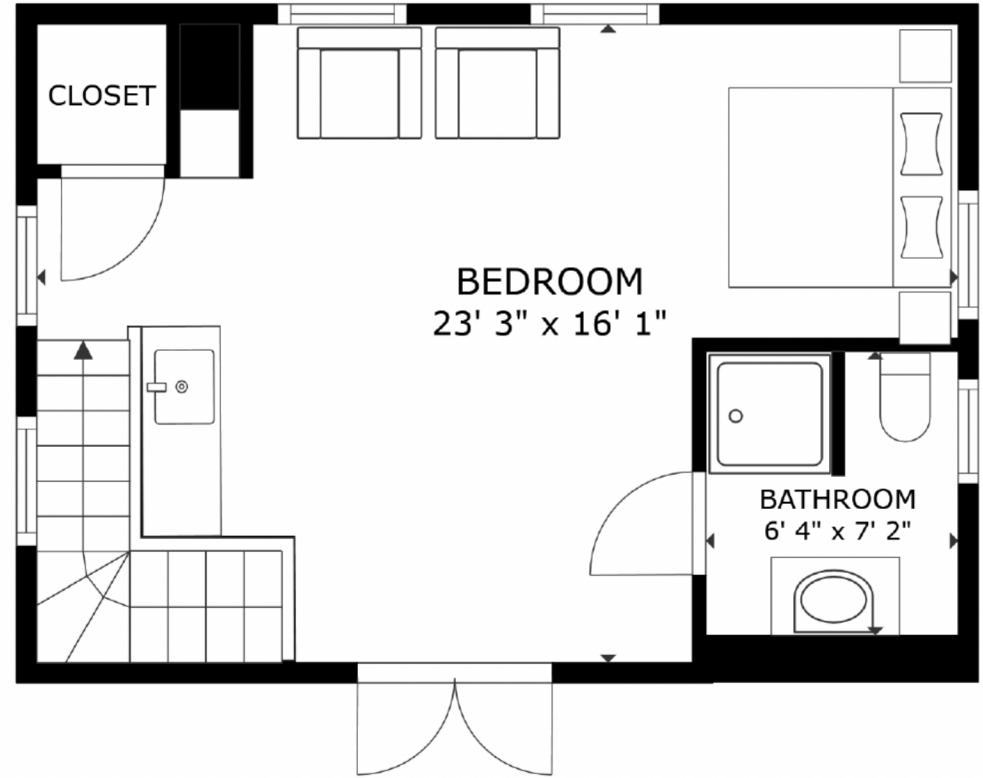
BASEMENT

GROSS INTERNAL AREA
 BASEMENT: 1,287 sq. ft, FLOOR 1: 1,622 sq. ft,
 FLOOR 2: 1,608 sq. ft
 TOTAL: 4,517 sq. ft
 SIZES AND DIMENSIONS ARE APPROXIMATE, ACTUAL MAY VARY.

Basement | 11 Monomoy Road



FLOOR 1



FLOOR 2

GROSS INTERNAL AREA
 FLOOR 1 91 sq.ft. FLOOR 2 369 sq.ft.
 EXCLUDED AREAS : GARAGE 253 sq.ft.
 TOTAL : 460 sq.ft.

SIZES AND DIMENSIONS ARE APPROXIMATE, ACTUAL MAY VARY.

Pool House | 11 Monomoy Road