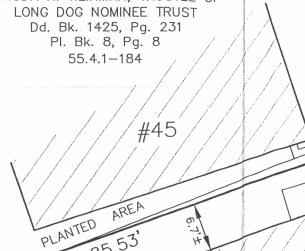
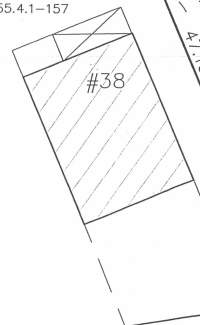


N/F
 RHODA H. WEINMAN, TRUSTEE OF
 LONG DOG NOMINEE TRUST
 Dd. Bk. 1425, Pg. 231
 Pl. Bk. 8, Pg. 8
 55.4.1-184



N/F
 38 PLEASANT STREET, LLC
 Dd. Bk. 1460, Pg. 168
 PLAN NO. 04-47
 55.4.1-157



STONE RETAINING WALL

CB FND
 (Under Curb
 7" Down)

PINE (PUBLIC) STREET

CRB FND
 DISC in Curb

DHCB FND
 HELD

SILVER (PUBLIC) STREET

CRB FND

I.PIPE FND
 (Under Pave.
 6" Down)

INHABITANTS OF THE
 TOWN OF NANTUCKET
 SEE Dd. Bk. 112, Pg.416,
 Rd. Bk. 3, Pg. 20
 AREA=181± S.F.